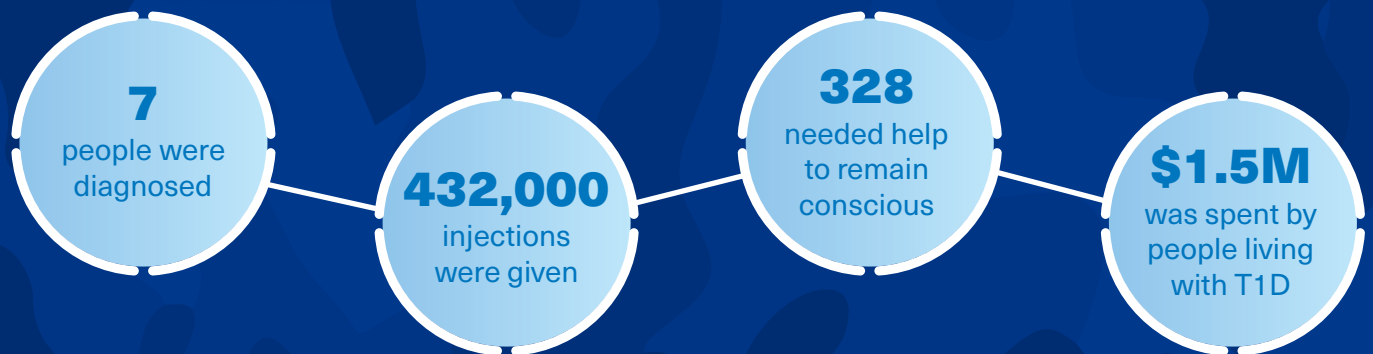


# THINGS YOU DIDN'T KNOW ABOUT TYPE 1 DIABETES



**MORE THAN 120,000 AUSTRALIANS  
LIVE WITH TYPE 1 DIABETES**

## TODAY IN AUSTRALIA:



## WHAT IS TYPE 1 DIABETES?

Type 1 diabetes (T1D) is an autoimmune disease in which insulin-producing beta cells in the pancreas are mistakenly destroyed by the body's immune system. People are typically diagnosed with T1D after showing symptoms such as nausea, vomiting, extreme thirst, exhaustion, rapid weight loss, frequent urination.

## TREATMENT

The causes of T1D are not fully known, and there is currently no cure. People with T1D are dependent on insulin to survive.

## HELP US DEFEAT T1D AND TURN TYPE ONE INTO TYPE NONE

JDRF is the leading non-profit organisation driving progress for T1D. We have been part of every breakthrough in T1D care in the last 45 years. We fund research to prevent, treat and eventually cure type 1 diabetes. We drive innovation, demand action and stand with everyone facing life with T1D.

**SUPPORT THE BLUE ARMY IN DEFEATING T1D  
AND TAKE ACTION BY DONATING NOW!**

**BLUEARMY.JDRF.ORG.AU**

**JDRF** IMPROVING  
LIVES.  
CURING  
TYPE 1  
DIABETES.